

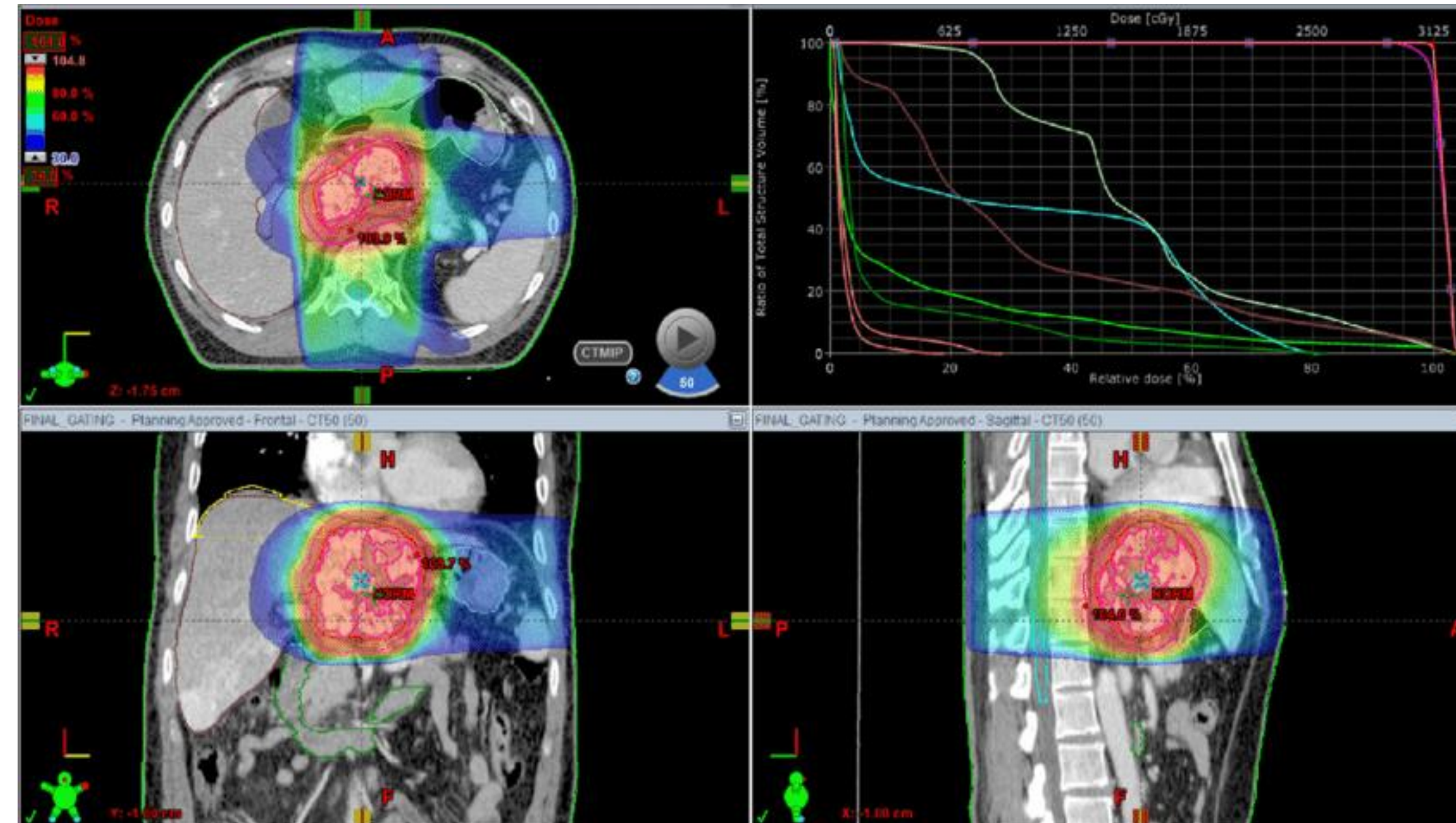


Clinical Internship at Mays Cancer Center Kennedy Howland, Biomedical Engineering, 2021

Professional
Development

SUMMARY

In my major we're required to either take a clinical internship course, or to find a legitimate clinical internship experience for credit. For my experience I was able to shadow both radiation oncologists and medical physicists at Mays Cancer Center. Mays Cancer Center is associated with both the UT Health Science Center and the MD Anderson Cancer center. My goals for this experience were to make professional connections, learn about medicine and whether it's a career path I'd pursue, and to think like a biomedical engineer finding opportunities for new medical devices and treatments. While shadowing I was able to learn about all aspects of radiation oncology, participate in treatment planning, and interact with patients.



SPICES

This experience gave me insight into the medical field and provided me with the opportunity to look for medical problems which may necessitate a biomedical engineer's involvement to solve and was therefore valuable to my professional development.

HERBS

This experience embodied benevolence as I was able to interact with many patients helping to ease their worries as they prepared for cancer treatment. I was also able to practice support at this internship by playing a supporting role to the physicians, aiding them in their work and patient interactions, but I also played a supporting role for patients making sure they felt comfortable with the process.

LEARNING OUTCOMES

This experience taught me ethical reasoning as I observed cancer cases in which the physicians had to outline the best options, ethically and medically, to the patient. This internship also taught me self-reflection and awareness, as I realized that while I was learning and thinking like a biomedical engineer, I was also helping patients through one of the hardest times of their lives.



IMPACT

During this experience I shadowed physicians as they planned treatments and performed clinical work, allowing me to interact with patients. I believe I made an impact on the patients I met, helping them to feel comfortable while learning about their treatment. Personally, I feel I've made valuable connections and learned enough about the medical field to genuinely consider it as a career path. Additionally, through my case reports I was able to think as a biomedical engineer considering opportunities for new medical treatments and devices.

ADVICE

To students looking into a clinical internship, or internships in general, I'd say don't be intimidated by the professionals around you; they're willing to help you learn and you'll get more out of the experience if you're comfortable in the environment and unafraid to ask questions.