



Berridge Manufacturing Company Ruben Ureno, Civil Engineering, 2021

Professional
Development

SUMMARY

Berridge Manufacturing Company is a nationwide metal roofing company which manufacturing metal roof, wall, soffit, and fascia panels for primarily commercial buildings. In spring 2018, I was hired as an engineering intern without any prior experience in the industry and in only the first year of college. Under the guidance of a staff engineer, I learned how to perform engineering calculations for wind loads components and cladding. During the span of two years and an estimated 1,112 working hours, I have been exposed to a corporate environment, drafted shop drawings with AutoCAD, and was directly involved in meeting company goals and mission to provide a quality product to our customers throughout the nation.



SPICES

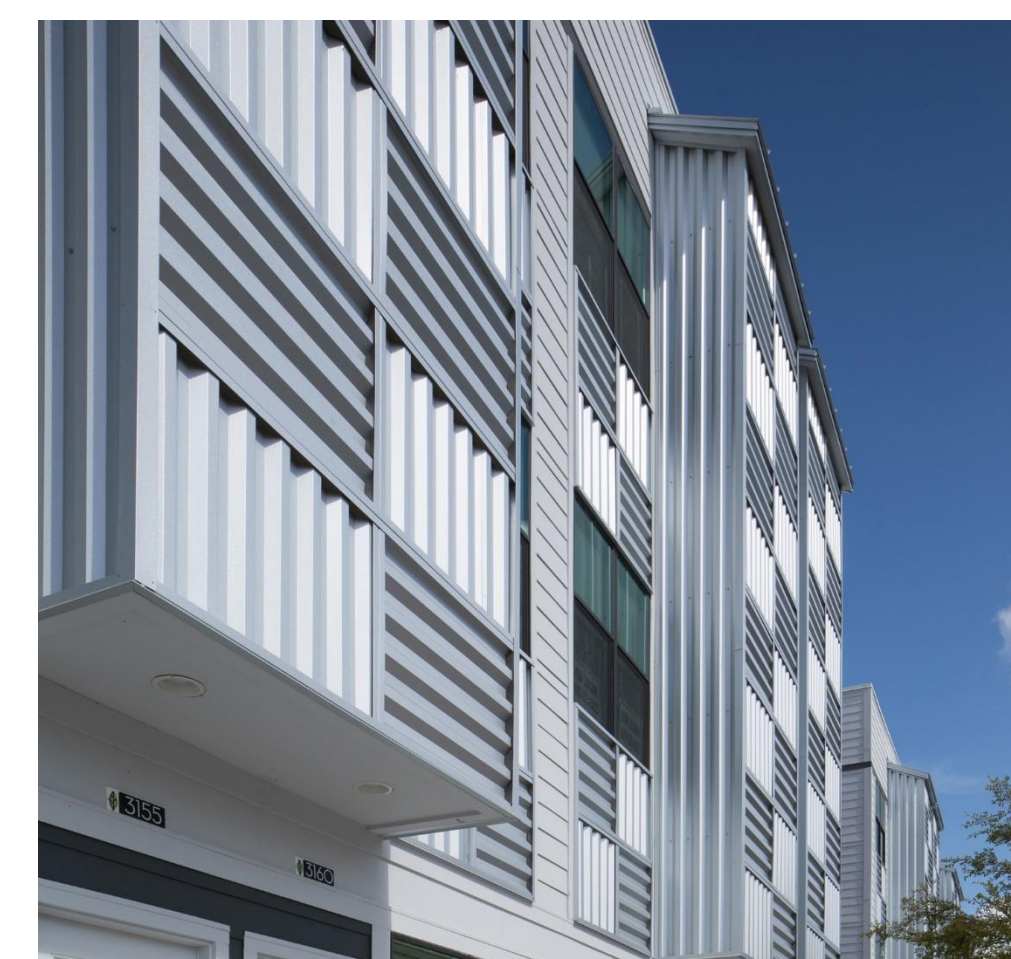
Through my experience Berridge Manufacturing I have developed an understanding of the many components required for a company to run efficiently and the building materials industry.

HERBS

With the engineering code of ethics applicable, it is important to make conservative decisions with the safety of the public in mind when performing calculations that will influence the integrity of a building.

LEARNING OUTCOMES

For every project there are a list of requirements needed before calculations or drawings are sent to the customer. Communication via phone, email, and file servers allows for these projects to be tracked by team members as they are being worked on. Organization is vital to the turnaround time with projects often being scheduled out over a month in advanced. As I completed projects and met deadlines, I gained agency through accomplishment.



IMPACT

Being an engineering intern with Berridge Manufacturing Co. has provided me the opportunity to build a foundation of experience to draw from as I progress into the engineering field. I have learned how to approach problems from different perspectives, collaborate with others on large projects, use Excel to perform lengthy calculations per code requirements, and applied knowledge of AutoCAD as the company continues to grow.

ADVICE

It is never too early to start looking for opportunities to add experiences to your resume. Internships are always appearing periodically on handshake and on LinkedIn.